



*Creative and
Performing Arts*

Nepean Creative and Performing Arts High School



‘Aspiring the Heights’ through Care, Opportunity, and Success

School Information Handbook 2023



Our School Vision

At Nepean Creative and Performing Arts High School we aspire, in all things, to demonstrate care for ourselves, others and our community so that all feel heard, seen, valued and accepted.

We aspire to grow in understanding, individual expertise and creativity, striving with courage and cooperation, to flourish now and into the future.

We recognise and celebrate optimism, engagement, achievement and the pursuit of personal excellence.

In all things we aspire the heights through care, opportunity and success.



Table of Contents

Administration Office	5
Attendance.....	5-7
Award and Recognition System	7,8
Ball Games	8
Bell Times.....	8
Bicycles.....	9
Bus Bay.....	9
Bus and Train Travel.....	9,10
Canteen.....	10
CAPA Students.....	10,11
Performing Arts Extra-Curricular Activities.....	11
Creative Arts Students.....	12,13
Performing Arts Students	13-15
Car Travel - Student drivers and passengers	16
Careers	16
Carnivals and Houses	16,17
Change of Family Details	17
Computers and Internet Use	18
Curriculum - Subjects	18,19
Deputy Principals	20
Discipline and Welfare - Student Values	20,21
Drop off and Pick up of Students.....	21
Excursions	22
Facebook.....	22
Fees and Voluntary School Contributions	23
Homework & Homework Centre	23
Library.....	24
Lockers.....	24

Office Duty	24-25
Out of Bounds Areas	25
P&C Association	25
Parent Newsletter - THE LINK	25
Parent/Teacher Evenings	25
Parking.....	26
Peer Mediation Program.....	26
Prohibited Items.....	26-27
Safety.....	27
School Carnivals	28
School Counsellor.....	28
School Diary	29
Sport.....	29
Student Assistance Scheme	29
Student Health.....	30
Term Dates, 2023	32
Uniform Requirements	32-36
Uniform Shop	36
Visitors to the School	37
Website.....	37
Wellbeing & Student Behaviour Code	38-39
CAPA Subjects & Electives Information	40-42
School Financial Contributions/Fees	42-48
P&C dates for 2023	49
Staff List/School Captains & Vice Captains	50,51

Administration Office

The Administration office is located in A Block and is open from **8.00am to 3.15pm** daily. The office staff can assist parents and students with most enquiries. The school can be contacted during office hours by telephone on **4728 7200**. Messages can be left, outside of office hours, on the school answering service.

Attendance

The Education Act 1990 requires that parents ensure their children of compulsory school age are enrolled at, and regularly attend school.

At Nepean Creative & Performing Arts High School student attendance and wellbeing is of utmost importance. Regular attendance at school is essential for students to maximise their potential. Schools, in partnership with parents/guardians, are responsible for promoting regular attendance of students.

Research highlights a clear correlation between student attendance and the achievement of quality academic, socio-economic and health outcomes. Research indicates that students with an attendance rate below 90% are educationally at risk. Above 95% is our expected student attendance. Here at Nepean Creative & Performing Arts High School, 'Every Day Counts' and 'every minute matters'.

SMS Messaging and Attendance

Student attendance is monitored closely through the use of Sentral, which is our electronic roll marking program. The Sentral roll is marked at the beginning of the school day during roll call for Years 7-11 and every timetabled period each and every day for all students Years 7-12.

To ensure timely communication with parents, a SMS text message is generated after roll call from Sentral and is sent to the registered mobile phone of a parent/guardian for any student who is marked absent during roll call.

Parents **are able to reply to the message** and should add **their child's full name, year, date of absence and the reason they are absent and/or late**. Please see following, an example reply:

- e.g. Steven Scott, Year 11 was sick yesterday (Tuesday 15 November)
- Text version 'Steven Scott Yr11 Sick Tues 15/11/21'

If you do not reply by text, please send a note with your child upon their return to school to the Head Teacher Administration Office with the required detail and/or you can call the Head Teacher Administration SAO and explain the absence over the phone and/or leave a voice message with the required details.

Some of the other uses of the Sentral SMS messaging system can include notification of:

- Announcements or reminders of meetings or forthcoming events such as Camps, Vaccinations, Parent Teacher Night, Presentation Night, Recognition Assembly etc.

To ensure all absences are explained and that our attendance records are accurately updated, we will contact parents/caregivers about any unexplained absences for their child if they have not been explained within a reasonable time frame. The school expects parents/carers to contact the school in advance if you know your child will be absent.

Roll Call Organisation

Roll Call takes place at the beginning of the school day. It is an important time for students, as it allows them to settle in with staff and peers in preparation for the school day ahead. During this time students will receive important announcements for the day or week ahead. Students are organised into roll groups by their year group or into specialised roll calls based on student focus groups.

Extended absences/leave

If your child will be absent for more than three school days due to illness, family holidays, involvement in elite arts, sports or entertainment etc. please contact the Head Teacher Administration Office SAO. For extended periods of time, an Exemption Form may need to be completed. Exemption Forms can be obtained from the Head Teacher Administration Office.

Stage 6: Senior Students

All Year 11 students must attend Roll Call. During Study Periods Year 11 and 12 students are expected to be either in their respective senior area or in the Library working on independent tasks or assessments.

Senior students with a study period in Period 5 will need to sign-out for attendance and record keeping purposes if parental/carers permission is given.

If you are concerned about your child's attendance?

Please contact the Head Teacher Administration immediately if you have any concerns about your child's attendance so that the appropriate support can be put into place. Early detection and intervention surrounding attendance concerns allows for appropriate support structures to be put into place to support individual students and can help to restore positive attendance habits for life.

Explaining Absences

On occasion, your child may need to be absent from school. Justified reasons for student absences may include:

- being sick or having an infectious disease
- having an unavoidable medical appointment
- being required to attend a recognised religious holiday
- exceptional or urgent family circumstances e.g. attending a funeral.

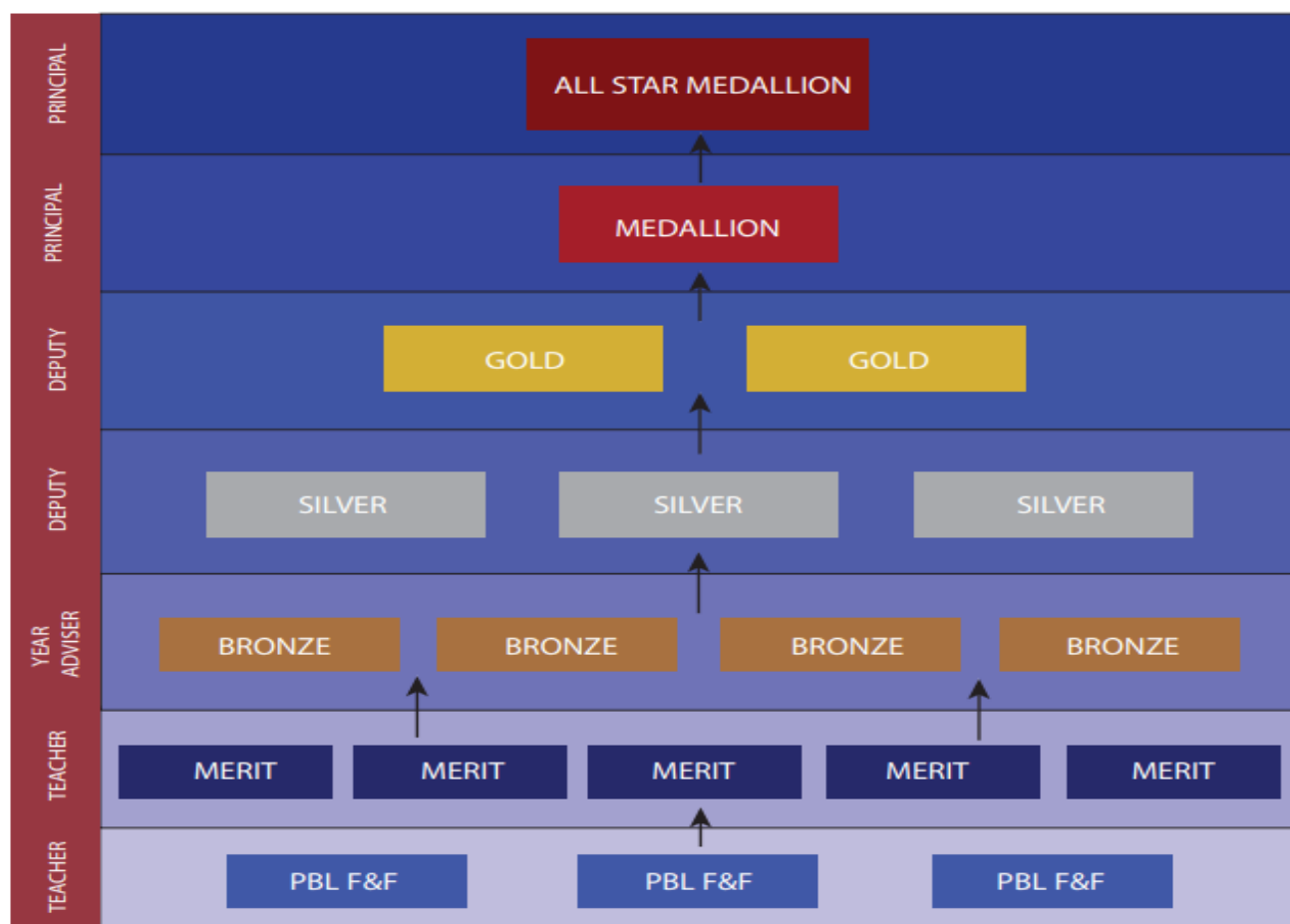
Parents must provide an explanation for absences to the school within 7 days from the first day of any period of absence. Where an explanation has not been received within the 7-day timeframe, the school will record the absence as unexplained and unjustified on the student's record. If students are absent for 3 days or more due to a medical illness, a medical certificate should be provided if applicable.

Award and Recognition System

Positive Reward System

Consistent application and achievement is recognised at our school through our positive reward system. Refer to the *Student Diary* for full explanation of the reward system.

Recognition assemblies are held each semester (refer to the school calendar in Sentral for dates). Recognition Assemblies acknowledge outstanding attendance, school community contributions, semester report achievements, community contributions, as well as the Silver and Gold Award recipients.



Ball Games

Ball games are to be played on the oval. **The areas between "C" & "D" Blocks, the Quad and "E" & "A" Blocks are quiet areas and no ball games are permitted.** Handball only may be played in the Quad. No throwing of any object is allowed inside school buildings.

Bell Times

Please scan the below QR Code to view up to date Bell Times



Bicycles

Students who ride bicycles/scooters to school must leave them inside the bicycle compound near the hall. The compound is locked during school hours. Students must secure their bicycle/scooter and helmets to prevent theft. Students must wear a helmet when riding their bicycles/scooters. The school is unable to accept responsibility for theft or damage.

Bus Bay

This is for the sole use of buses. **Private cars should not enter to park or use the bus bay as a turning bay.** This can attract a fine from the local police. This will ensure the safety of all students at all times.

Bus & Train Travel

On application to NSW Transport, a student whose home is more than 2kms radial distance from the school will be issued with a free Opal Card. All students travelling with an Opal Card are subject to the conditions outlined in the *Student Code of Conduct when Travelling*. The bus driver, rail staff, the Principal and Deputy Principals have the authority to withdraw Opal Cards from any student who behaves in an unacceptable manner on any journey. **For information regarding bus timetables please contact your local bus company or Transport NSW.**

The following information has been taken from the *School Student Transport Scheme (SSTS) Booklet*. Further information on the scheme can be found by checking the School Student Transport Scheme's website.

- To be eligible for an Opal Card “a secondary student (Years 7-12) needs to live more than 2kms (radial distance) from school, or 2.9kms or more by the most direct practical walking route to the nearest entry point to the school.”
- SSTS can **only** be used between **home and school**, and for approved travel commencing between the hours of 6.30am and 7.00pm Monday to Friday on school days. It cannot be used for school excursions, sporting activities away from the school, excursions, work experience, before and after school care, to relatives/friends' houses or parents' employment.
- Travel **must be** by the shortest and most economical approved route between the student's home and school. It is only available from the

boarding point closest to the student's home to the appropriate set-down point.

- A student can **only** use subsidised travel for the same mode of transport and route in the morning and afternoon five days a week. For example, rail cannot be used just in the mornings and a bus in the afternoons. (e.g. from Nepean Creative and Performing Arts High School to Penrith Railway station - you must decide if you will catch a bus or a train and apply for that mode of transport only).
- If the student's parents have joint custody they can apply for subsidised transport to cover both residences. They should have either a **Residency Order**, or if the matter has not gone to the Family Court, a **statutory declaration from each parent** that specifies time sharing arrangements for the child residing at both addresses. This information needs to be attached to the application.
- If a student's Opal Card is lost or stolen, they need to apply for a replacement from NSW Transport. A fee will be charged and students must pay the fare until a new Opal Card is issued.

FOR ALL ENQUIRIES PLEASE RING NSW TRANSPORT INFORMATION LINE ON 131 500 or visit transportnsw.info

Canteen

The canteen is available for student use before school from 8.00am, during recess and at lunch times. Lunch may be ordered before school or by the end of recess. Students from Year 7 to 10 are not permitted to go to the canteen during class time. Senior students may go to the canteen during study periods.

CAPA Students

All students have the opportunity to audition into the areas of, Circus Arts, Creative Arts, Dance, Drama, and Music, *(Years 7 to 10 only)*. In Year 7, students are able to audition into one main area of study within CAPA. Successful students will experience five periods per fortnight of their auditioned subject within a purely auditioned class. Students will then carry this subject through from Stage 4 (Years 7 and 8) into Stage 5 (Years 9 and 10) thereby developing their skills consistently through junior high school and preparing them for senior high school. Students in Year 8 have the opportunity to select two electives and students in Years 9 and 10 have the opportunity to select three electives

to study. CAPA students also have the opportunity to audition for the extra curricular program which includes ensembles, companies and studios. The extra-curricular program is run before and after school and during sport time. Auditions are held within the first 3 weeks of the new school year. Extra information regarding the CAPA Extra-Curricular program will be released on the school website and Facebook page towards the end of Term 4, 2022.

Performing Arts Extra-Curricular Activities

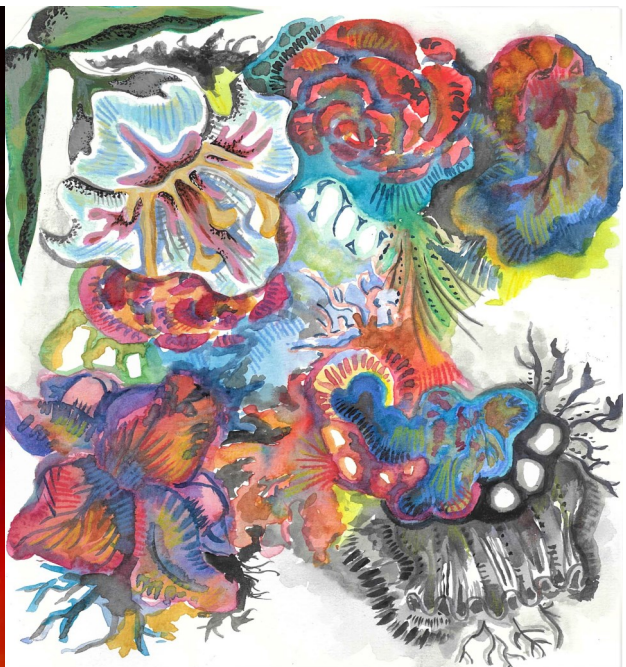
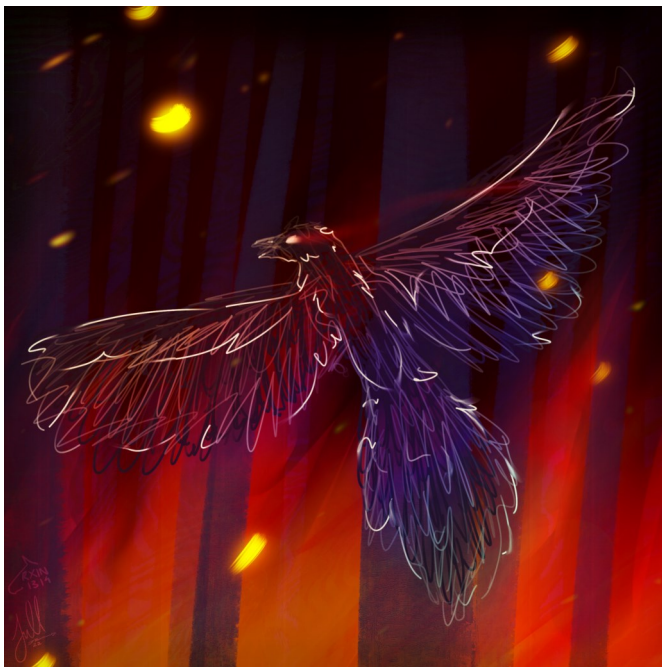
As part of the Extra-Curricular program offered at Nepean CAPA High School, students are encouraged to audition for the Ensemble and Company Program. The Ensemble and Company Program is a practical extension program for Performing Arts Subjects that runs before and after school and during sport. Successful students will train and rehearse for anywhere between 1 and 2.5 hours (depending upon the Ensemble or Company) to extend their practical and technical skills in specific styles or genres within Circus Arts, Dance, Drama and Music. The Performing Arts Faculty runs multiple Ensembles and Companies that are available to students for audition. Auditions are held within the first 3 weeks of each new school year.



Creative Arts Students

Students in Mainstream and Audition Arts will experience Creative Arts through the interrelated study of Art Making and Critical Historical Study. Extra curricula offerings in Creative Arts includes:

- **Intensive Studio** offers students the opportunity to engage in 5 Intensive Studios before class with professional artists. These are Painting, Sculpture and Performance, Photo Media, Drawing and Print Making.
- **Art Edge** is a platform for students to demonstrate their talents through entering artworks into a variety of competitions and shows. The Intensive Art Edge program both extends and complements the Creative Arts



school curriculum and is open to aspiring mainstream students and audition students.

- **Arts in the Community** is a site-specific studio experience that builds greater community connection to the Creative Arts. Students partake in the design and production of public artworks and produce works responding to a site. This studio is held on Wednesday afternoons.
- **NCA Media Team** is a dynamic and proactive digital media group open to aspiring mainstream and audition art students. This Team digitally captures the success of school events and experiences for print and media platforms. Being a part of this Team assists in the development of purposeful portfolio production which is industry aligned.

Performing Arts Students

Circus Arts

Students will experience, understand and value Circus Arts through the development of strength, flexibility, conditioning and the application of safe circus practice to learn and execute various aerial apparatus and floor based circus skills. They will learn how to create acts, develop performance skills and analyse their circus technique and professional circus acts based on their developing knowledge of the historical and social context of Circus in Australia and overseas. Students will have the opportunity to learn skills in aerial, acrobatics, equilibristic and manipulation. Students will also have the opportunity to perform and watch circus performances throughout the year.

Dance

In the study of dance as an artform students develop knowledge, understanding, skills, values and attitudes 'through' and 'about' the interrelated experiences of performing, composing and appreciating. Dance performance consists of dance technique, body skills and the application of safe dance technique to selected styles of dance. Dance composition involves creating and structuring movement to express and communicate ideas and feelings through the use of choreographic devices and the elements. In appreciation, students study and analyse dance. They observe and describe performances, compositions and dance works of art. Students analyse dance works of art within a social, cultural or historical context as a reflection of the society from which it has emerged.

Drama

Students will be introduced to the subject of Drama. Students will learn to make, perform and appreciate Drama. They will learn about the elements of Drama including: character, focus, time, place, situation, space, structure, rhythm, pace and tension. Students will develop their performance skills in a range of opportunities including playbuilding, improvisation, theatresports, lip-sync and script work. Students will learn to work as a team in theatre games, focus activities and group performances. Students will learn to appreciate drama and theatre by attending workshops, professional performances, writing theatre reviews and reflecting on their work in their logbooks. Drama is a dynamic learning experience that caters for a diverse range of students and prepares them for effective and responsible participation in society, taking into account moral, ethical and spiritual considerations.

The study of Drama engages and challenges students to maximise their individual abilities through imaginative and dramatic experiences created in cooperation with others.



Music

Music provides students with the opportunity to perform, compose, listen to music and learn about varying styles and genres of music. In Stages 4 and 5 the courses build upon each year of learning with students focusing on an instrument of their choice in the practical component of the course. Students are also given the opportunity to learn to compose music and record their compositions. Alongside the practical aspects of the course students study Aural and Musicology where they learn about music through the ages to the present incorporating Rock, Jazz, Classical, Film, Australian and Music of a Culture. Students have opportunities to perform in class time and also at various curricular and extracurricular events. In Stage 6 students focus on their instrument in preparation for performance at the HSC. Students also engage in Composition, Musicology and Aural activities selecting their strongest component in Year 12 as their Elective focus. Throughout all years we aim to support students in their development as professional performers teaching them stagecraft and performance techniques.



Car Travel - Student Drivers and Passengers

The school adheres to the Department of Education policies and regulations regarding student drivers. The *Use of Private Vehicles by students* form, available from the Deputy Principal, must be completed before a driver or passenger may travel by private vehicle to any school activity (e.g. excursion). When at school, cars are to be legally parked on adjacent streets – with due regard for the rights of our neighbours (i.e. do not litter around cars, play loud music or drive irresponsibly).

Students' vehicles are NOT to be parked on school premises.

Careers

Our Careers Adviser may be contacted by telephone on **4728 7247**. The aim of the *Work Education Program* is to assist students in the transition from school to employment and further education and training. In Years 7 to 12 the Careers program is presented in a number of ways which include, among others:

- Career Markets
- Excursions
- Films and Video
- Guest Speakers
- Mock Interviews
- Seminars
- Tertiary Preparation Days
- Work Experience

Carnivals and Houses

All students will have the opportunity to participate in all three major sporting Carnivals: Athletics; Cross; Country; and Swimming. Students will receive points for participation for their House and successfully placed athletes will go on to represent at our Zone Carnivals for their respective sport, with further opportunities to proceed to Sydney West and CHS (State), if successful.

The school is divided into four houses to foster school spirit.

Bowman

A—D

House colour: **Red**

Descendants of a family in the Penrith area with links to the Aboriginal Dharruk tribe. They owned a farm called Archerfield near Richmond.

Forbes

E—K

House colour: **Blue**

Francis Forbes – First Chief Justice of NSW in 1823. Owned Edinglassie (63 acres of land). Introduced 'trial by jury'.

Perry

L-Q

House colour: **Yellow**

George Perry – Zoologist and brothers James, John and William owned land at St Marys, Penrith and Mulgoa.

York

R—Z

House colour: **Green**

The York family owned the York Estate which was given by land grant to the daughter of Governor Bligh.



Change of Family Details

In order for the school to maintain an accurate record of family details for each student, it is important that any change of address, telephone numbers and emergency contacts, in addition to changes in family status, guardianship and custody arrangements be notified **promptly in writing** using the *Change of Details Form*. This form can be obtained from the school website or from the Administration Office. Please return this form to the Administration Office.

Computer and Internet Use

Our school encourages the use of computers in all Key Learning Areas. Our school provides access to both desktop computers and laptops through computer rooms, flexible learning spaces, library loans and the encouragement of BYOD. The use of computers at our school is both a responsibility and a privilege, with students citing the NSW Department of *Education Acceptable Usage* policy on engaging one of our school devices or when logging onto the internet on a BYOD device. Responsibility for use of any device falls with the logged in user, meaning students should never share usernames or passwords. Students have access to a NSW Department of Education student portal where they have access to their emails, Microsoft Office 365, Adobe Creative Cloud and much more. At our school students can also use their login to access our Sentral student portal which provides access to their timetable, daily notices and more. All internet content at our school is filtered for any inappropriate content.

BYOD at Nepean

Our school promotes the use of students own devices, with the exception of mobile phones. Students are asked to bring their device to school every day. Device charging stations are located around the school for convenient charging. A BYOD guide for parents can be found on our school website: [Bring your own device \(BYOD\) - Nepean Creative and Performing Arts High School \(nsw.gov.au\)](https://www.nsw.gov.au/bring-your-own-device-byod)

Contacting Students

In an emergency, parents are required to phone the school to contact their child. In order to fulfil our duty of care obligations, students must report to the Administration Office, with a note from their class teacher, if they are ill and staff will notify parents.

Curriculum - Subjects

The courses offered at Nepean are designed to cater for the needs of our students. All courses follow the guidelines laid down by the New South Wales Educational Standards Authority (NESA), which co-ordinates the curriculum pattern from Kindergarten to Year 12. During Year 7 and 8 (Stage 4) students will gain a broad experience in a wide variety of subjects organised in Key Learning Areas. Year 8 students study two elective courses

in addition to the following subjects:

- Creative and Performing Arts (CAPA) – Music / Visual Arts
- English
- Human Society and its Environment (HSIE) – History, Geography
- Languages other than English (LOTE)
- Mathematics
- Personal Development, Health and Physical Education (PDHPE)
- Science
- Technology (Mandatory)

During Years 9 and 10 (Stage 5) all students must follow courses in English, Mathematics, Science, History and Geography and PDHPE. They will choose to study three electives at the end of Year 8.

During Years 11 and 12 (Stage 6) English is the only compulsory subject. The



school offers a range of Board Developed courses leading to the award of a Higher School Certificate. Relevant Board Endorsed and Vocational Education and Training (VET) courses are also offered. The Head Teacher Secondary Studies, along with the Year Adviser and Careers Adviser will monitor and advise Year 11 students in their study program. Suitable Year 12 students may study a range of 1 unit extension courses.

Deputy Principals

Nepean CAPA High School has three Deputy Principals who collectively lead and promote the vision and strategic directions of our school. Each of the Deputy Principals: supervise two student year groups; manage student engagement, discipline and wellbeing; and collaboratively work with families and the community to support student learning and aspiration. Alongside their management of the day to day operation of the school, the Deputy Principals also oversee the broad range of curriculum areas offered at the school and collaboratively lead teaching, learning and continuous school improvement as part of the Executive and Senior Executive Teams.

To make an appointment with one of the Deputy Principals please contact the Administration Office by telephone on **4728 7200**.

Mrs N Isakov

Years 7 & 10

Mr M Knowles

Years 8 & 11

TBA

Years 9 & 12

Discipline and Welfare – School Values

At Nepean we share a commitment to Aspire the Heights through the core values of Care, Opportunity and Success. To create and maintain a positive learning environment we expect students to uphold these values in all places and at all times.

Student Welfare includes everything that the school community does to meet the personal and social needs of students and enhance their well-being. It involves:

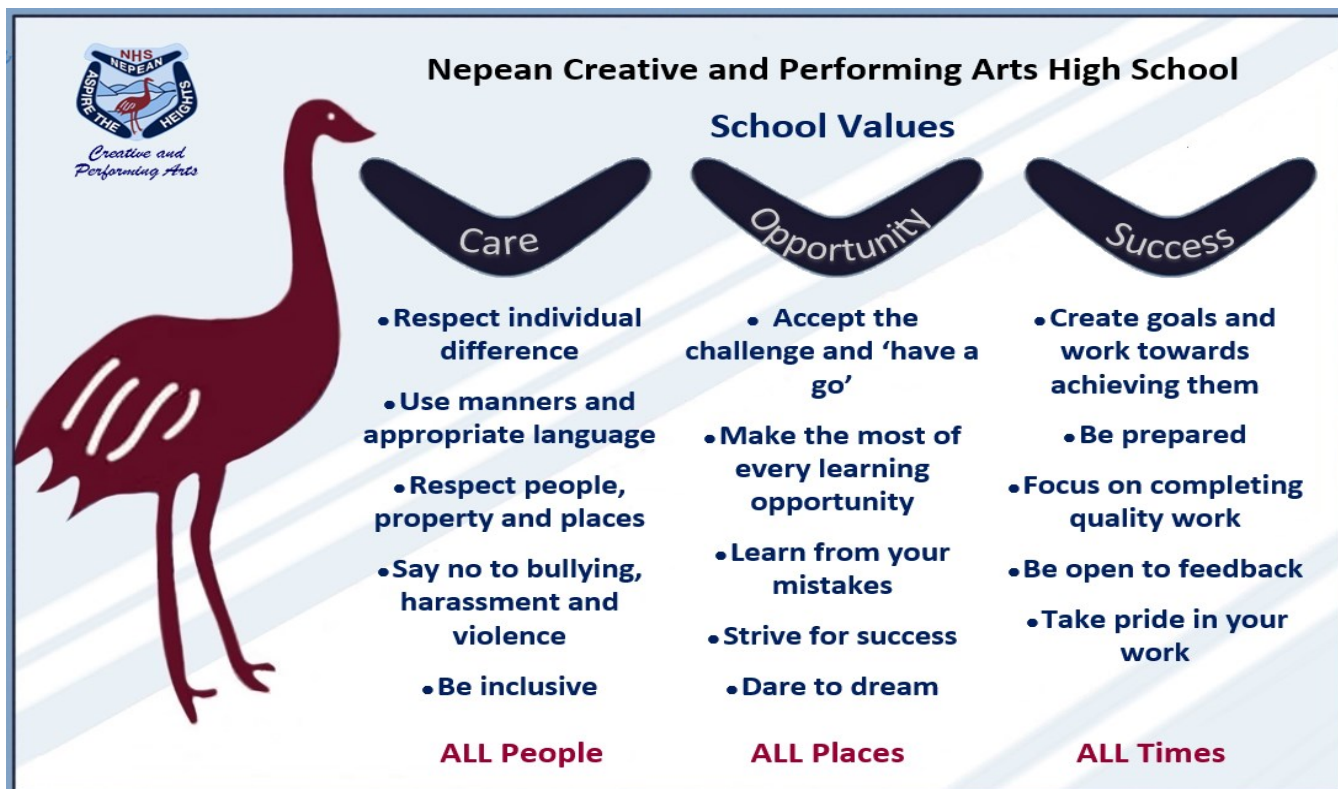
- Recognising, valuing and developing each student as a total and unique person in the context of society, of which the school community forms a significant part.
- Emphasising equally, the rights and responsibilities of students.
- Heavily promoting the development of self-discipline and self-esteem.

Student Welfare operates within the framework of prevention, support, early intervention and development. It has, as its starting point, the development of mutual co-operation and respect between all members of the school community. Peer Mediation is also used as a strategy when appropriate to peacefully solve student conflict.

Student Discipline Measures

Students are placed on after school detention for serious offences and/or when lesser forms of punishment have had no effect. Parents are given 24 hours notice of after school detentions. Parents are responsible for the student's travel home at the conclusion of the detention.

Students may lose playground privileges, that is, they spend time with a



Head Teacher or a Deputy Principal. This is usually for playground misbehaviour and while a student is in isolation, in serious incidences, or when students are persistently disobedient. The privilege of attending excursions, the school Formal and/or Graduation may be withdrawn. On occasions where disciplinary responses at Classroom Teacher and Head Teacher level have not been able to resolve unsatisfactory behaviour, action will be taken in accordance with procedures and requirements set out by the Department of Education's *Student Behaviour Strategy*.

Drop off and Pick up of Students

Parents and students are not to drive through the gates into the school between the hours of 8.00am-3.30pm. Entry and parking is for Staff and authorised personnel only. Entry outside of these hours is permissible, but parents must exercise great care in order to maintain the safety of our students and staff and to reduce the likelihood of cars and pedestrians colliding.

Excursions

Excursions are arranged for students in Years 7 – 12 and are designed to complement the program of work being studied in class. Before attending a school excursion, written parental permission must be presented and excursion costs met.

When a class is taken on an excursion all students must wear **full school uniform** unless otherwise advised. Students are expected to behave in a responsible, safe and courteous manner, remembering the *Department of Education's Behaviour Code* for students at all times. Students whose record of behaviour has been deemed unacceptable may be prevented from participating in excursions, school dances or other extra-curricular activities for a specified period of time. Please view the calendar on the school's website for excursion dates.

<https://nepean-h.schools.nsw.gov.au>



Facebook

The school's Facebook page is a useful tool in allowing current, past and future students, and wider community to engage with our wonderful school. It provides an excellent snapshot of communication for the school and is an engaging space for sharing and celebrating our community, as they demonstrate our core values of *Care, Opportunity and Success*.

In keeping with Department of Education policy, this page is registered and all posts and comments to this page will be moderated by an administrator.

www.facebook.com/NepeanCreativeAndPerformingArtsHighSchool

Fees & Voluntary School Contributions

The Voluntary School Contribution has been determined by the Finance Committee and are set out for your reference at the back of this booklet.

The Voluntary School Contribution is necessary to cover the costs of such items as library service, sporting equipment, paper – including merit certificates, reports, newsletters and photocopying. Some compulsory and elective subjects require the payment of **Subject Materials Fees** which are to cover the costs of consumable items including food, fabric, wood, metal, plastic and paints used by the students. These fees are required to be paid at the commencement of each course of study.

The preferred method of payment for school and subject materials contributions is via the school website at:

<https://nepean-h.schools.nsw.gov.au>

Please click on the “Make a Payment” option and complete the details – please disregard the reference number). Parents and carers can also make payments at the Administration Office between **8.00am and 1.55pm**, Monday to Friday during school terms. Students may pay at the Administration Office before school, at recess or lunchtime only. Eftpos is the preferred payment method at the Administration Office

Homework & Homework Centre

Homework and home study are an important follow up to the day’s school work. All students are issued with a *Nepean School Diary* for which each student will be invoiced. The *School Diary* is to be brought to school each day and used to note dates for assignments, tests, assessment tasks, excursions, school carnivals and other important activities.



To support student's homework completion, Nepean runs a Homework Centre in the library from **3.00pm to 4.00pm** on **Monday and Thursday afternoons**. A number of teachers are present to give students general assistance with tasks at this time.

Library

The Library offers excellent opportunities for research and reading for pleasure. It is open to all students at recess and lunch times and for the Homework Centre on Monday and Thursday afternoons.

Parents are asked to encourage their children to make good and frequent use of the Library. The library is equipped with a comprehensive computer network which is available for students' research and study during both breaks and lessons. There are new and exciting novels, picture books, graphic novels (anime/manga) and non-fiction texts for specific topics. Borrowing is for two weeks. Students whose library books are overdue lose borrowing privileges and if a student loses a book, its replacement must be paid for.

Lockers

Lockers are available for hire over a 12 month period and are available from the Administration Office. There are two different sized lockers available at the following annual cost:

- \$20 for small locker
- \$25 for large locker

Office Duty

Year 7 and 8 students participate as an office assistant during the year. Students gain a greater knowledge of the overall daily running of the school and also gain confidence and independence assisting in this form of school service.

Students are informed via the daily notices the day before they do office duty. They need to bring homework or reading to complete when not doing tasks for the office staff and Senior Executive.

If the office duty day falls on the day of an assessment the student needs to inform the School Administration Manager or a Deputy Principal and they will be sent to the relevant class.

Out of Bounds Areas

The school car parks, hall area, ovals (other than main oval), hockey field and the front of school beyond the walkway are unsupervised during breaks and are therefore out of bounds. Students are not permitted inside the buildings during the lunch or recess breaks unless they are visiting a teacher for a valid purpose or a wet weather procedure has been actioned.

P&C Association

Parents/Carers and community members are invited to join the P&C. Meetings are held on the **fourth Wednesday of the month, during school terms**. The meetings are held in the Staff Common Room from 7.00pm and finish at approximately 8.30pm with tea and coffee. These meetings are an excellent way of finding out more about the school and our children's learning.

Everyone is welcome.

Parent/Carer Newsletter / The Link

Our main form of written contact with parents is the school newsletter, usually published twice each school term and distributed electronically. The newsletter contains many important items of information. The school newsletter can also be viewed and downloaded from the school website:

<https://nepean-h.schools.nsw.gov.au>

Parent/Teacher Evenings

Parent/Teacher nights give parents and teachers the opportunity to personally discuss the progress of students. A note is sent home advertising the evenings in advance. The evening is also advertised in "THE LINK", in the Weekly Bulletin to families, school website, Calendar, school Facebook page and school sign. Prior to the night, parents will have the opportunity to "book" a time slot to see the relevant teachers. Follow-up appointments can be made if a more detailed interview is necessary at a later date. Parents and Carers should feel free to contact the school throughout the year to discuss their child's progress with the relevant staff member or Year Adviser.

Parking

Parking and entry on school site between the hours of 7:45am and 3:30pm is for **Staff and authorised personnel only**. Imperial Avenue or Gardenia Avenue is a close location to park for dropping off or picking up your child.

Peer Mediation Program

Conflicts between students can arise as a part of daily life. Conflicts can result from harassment and bullying including name-calling, rumours, threats and problems with friendships. Mediation is a conflict resolution approach in which students in conflict have the chance to sit face-to-face and talk, uninterrupted, so each side of the dispute is heard. After the problem is defined, solutions are created and then evaluated. When an agreement is reached, it is signed by the students involved in the dispute. The record of success of this process is impressive because the students themselves are fully involved in problem resolution. The trained peer mediator is the outside third person who leads this process. The student mediator does not take sides and keeps all information confidential. Mediation is a skill that involves good communication, problem solving and critical thinking. See your Year Adviser or School Counsellor to arrange mediations.

Prohibited Items

Certain items are not to be brought to school. For the safety of students and staff and to provide a secure learning environment, the following items are not permitted at school. They will be confiscated and returned as appropriate. Illegal items will not be returned. Items prohibited from school include:

- Illegal drugs, alcohol, tobacco or implements for using these items.
- Vapes
- Weapons, replica weapons or items that can be used as a weapon such as sling-shots, large rubber bands and other projectile devices.
- Fireworks and other explosive devices, matches and lighters.
- Aerosol cans and pump spray deodorants, perfumes.
- Chewing gum, high caffeine/energy drinks.
- Liquid paper, permanent marker pens, steel rulers.
- Water bomb balloons, laser pointers, roller blades.



While at school or travelling to or from school or involved in school-related activities, students are not permitted to:

- Smoke tobacco or vapes.
- Drink alcoholic beverages or drinks that look like alcoholic beverages.
- Inappropriately use prescription or over the counter drugs.
- Inappropriately use solvents or inhalants.
- Engage in any illegal activity.
- Behave in a manner that has the potential to bring our school reputation into disrepute.

If a student is found to be engaging in any of these kind of behaviours, action will be taken in accordance with the procedures and requirements set out by the Department of Education's *Student Behaviour Strategy*.

Safety

Accidents

If you are injured in an accident at school please inform the nearest teacher and then report to the Administration Office for medical attention. Department of Education accident forms must be completed.

Emergency Evacuation/Lockdown

In the event of an evacuation or lockdown, procedures are listed in all classrooms. Full school practices are held once each semester to familiarise everyone with the correct procedures.

Health and Safety (H&S)

Health & Safety requirements must be adhered to in all practical subjects to avoid accidents. This is especially important for footwear. Please see *Protective Clothing for Practical Lessons* on page 36.

School Carnivals

Nepean holds three annual sports carnivals, these include swimming, cross country and athletics.

Nepean CAPA High School carnivals are a compulsory school day, with an opportunity for all students to participate, regardless of prior experience. These carnivals are an integral part of our spirit and allows for progression for students to represent at further school sporting carnivals. Non-attendance at any carnival will require an explanation from parents, as per usual absence procedures.

School Counsellor and Student Support Officer

School Counsellors and the Student Support Officer are available for students to talk with and listen to in a friendly and supportive environment. This can often help students to see a more encouraging and optimistic future and so lead to better motivation to try harder at school and home. For adolescents, life can be sometimes confusing, occasionally unpleasant, often demanding, and yet sometimes vibrant and exciting. Parents/carers and students may contact a Counsellor to arrange an appointment on 02 4728 7225.

(Please be aware that there is often a waiting period before students can be seen due to the number of students and availability of the counsellors.)

School Diary

The *School Diary* is issued by the school and parents/carers are invoiced for the cost of the diary. It is a public document. Therefore, no other writing should be placed into the diary other than the correct homework, assignments and staff and parent/carer entries. Graffiti, colouring-in and letters to friends should not appear in the diary.

Sport

Sport for Year 7 is integrated into the school timetable. During the year they will be given the opportunity to participate in a Zone Gala Day. The focus for each year varies with Year 7 involved in a structured skills-based program. They will receive training in a number of selected activities that will improve their fundamental movement skills, team work and game play strategies.

Sport for Years 8 - 10 (optional Year 11) occurs on Wednesday afternoons between the hours of 1.00pm and 2.35pm. As we are a Grade Sport school, filling these teams each term is our priority. Should students be unsuccessful in being selected for a grade sport, they will have the opportunity to select a recreational activity for the term. Please understand that there are fees associated with most sports/activities and we require a commitment to pay. Information is given each term regarding the fees schedule and necessary information.

Student Assistance Scheme

In cases of genuine financial need, assistance is available through the Student Assistance Scheme, **to assist with the cost of uniforms**. Students going to and from Sport and on excursions must personally meet the cost of fares and other related expenses. As funds are limited, please supply your Centrelink Number or other supporting evidence, as a means of establishing your eligibility for assistance. Applications should be addressed to the Principal through the Administration Office. Please collect a copy of the Student Assistance Application Form from the Front Office or download from the school website submit it to the Principal via the Front Office Staff.



Student Health

If your child suffers from a disability, an allergy or chronic health issue or when a parent/carer becomes aware of a medical condition, a Medical Information Form needs to be completed to support the development of a Health Care Plan. Medical Information Forms are available from the Front Office.

Medication

Prescribed medication can be administered at school; however, there is Department of Education documentation which must be completed before issuing of medication can take place. No student is allowed to self administer medication without the knowledge and supervision of a trained member of staff. Any student who needs continual prescribed medication needs to collect the forms from the Front Office.

Illness and Accidents

Basic First Aid is provided to students in case of illness or accidents, and parents/carers are contacted to collect their child if necessary. Parents/carers must provide a current telephone number at which they can be contacted in the event of illness or injury at school and must notify the school if this number changes. **Children should not be sent to school if they are unwell in the morning.**

Should a student become ill during the day, they are to obtain a note from their class teacher or the teacher on playground duty (if this occurs during recess or lunch), they then report to the Front Office. If they are too ill to return to class, the parents/caregivers will be contacted to collect their child. Parents/Carers come to the Front Office and sign their child out of school for the remainder of the day. In the case of serious injuries or accidents, an ambulance may be called to assess the student and provide medical intervention.

Term Dates, 2023

Term	Students return	Last day of Term
1	<u>Years 7, 11 & 12</u> Tuesday 31 January 2023 <u>Years 8,9 & 10</u> <u>Wednesday 1 February 2023</u>	Thursday 6 April 2023
2	Tuesday 26 April 2023	Friday 30 June 2023
3	Monday 18 July 2023	Friday 22 September 2023
4	Monday 9 October 2023	Tuesday 15 December 2023

Uniform Requirements

The school community at Nepean has agreed to be a uniform school. Students are expected to wear the correct uniform every day and reflect our uniform requirements. We are proud of our school. Students wearing uniform with care and pride has an important role to play in creating a sense of belonging and connection with our school, as well as in how we present as a school to our community.

Black leather shoes are part of our uniform expectations and also ensure student compliance with Work Health and Safety requirements

Please do not buy an alternative item to those listed in the school uniform requirements.



JUNIOR SCHOOL GIRLS YEARS 7 – 10	JUNIOR SCHOOL BOYS YEARS 7 - 10
<i>Summer</i>	
<ul style="list-style-type: none"> • Nepean CAPA HS sky blue polo shirt or Nepean CAPA HS sky blue blouse. • Navy blue skirt (straight or pleated). • Navy blue shorts (no longer than knee length) - NO stripes, patterns, or visible logos. 	<ul style="list-style-type: none"> • Nepean CAPA HS sky blue polo shirt or Nepean CAPA HS sky blue shirt. • Navy blue shorts (no longer than knee length) - NO stripes, patterns or visible logos.
<i>Winter</i>	
<ul style="list-style-type: none"> • Nepean CAPA HS sky blue polo shirt or Nepean CAPA HS sky blue blouse. • Navy blue skirt (straight or pleated). • Navy blue trousers/Nepean CAPA HS track pants. NO jeans. • Light coloured undershirts underneath polo. Jumpers to cover long sleeved undershirt. Undershirts not to be visible. • Nepean CAPA HS woollen jumper, Nepean CAPA HS sloppy joe or plain navy blue jumper - NO writing, visible logos or hooded jackets. • Nepean CAPA HS jacket. • Nepean CAPA HS cardigan. • Nepean CAPA HS tracksuit. 	<ul style="list-style-type: none"> • Nepean CAPA HS sky blue polo shirt or Nepean CAPA HS sky blue shirt. • Navy blue trousers/ Nepean CAPA HS track pants – NO jeans. • Light coloured undershirts underneath polo. Jumpers to cover long sleeved undershirt. Undershirts not to be visible. • Nepean CAPA HS woollen jumper, Nepean CAPA HS sloppy joe or plain navy blue jumper - NO writing, visible logos or hooded jackets. • Nepean CAPA HS jacket. • Nepean CAPA HS cardigan. • Nepean CAPA HS tracksuit.

SENIOR SCHOOL GIRLS YEARS 11-12	SENIOR SCHOOL BOYS YEARS 11-12
Summer	
<ul style="list-style-type: none"> • Nepean CAPA HS white polo shirt/ Nepean CAPA HS white blouse. • Navy blue shorts (no longer than knee length) - NO stripes, patterns, or visible logos. • Nepean CAPA HS Tartan skirt. 	<ul style="list-style-type: none"> • Nepean CAPA HS white polo shirt/ Nepean CAPA HS white cotton shirt. • Navy blue shorts (no longer than knee length) - NO stripes, patterns or visible logos.
Winter	
<ul style="list-style-type: none"> • Nepean CAPA HS white polo shirt/ Nepean CAPA HS white blouse. • Navy blue trousers/track pants. NO jeans. • Nepean CAPA HS Tartan skirt • Light coloured undershirts underneath polo. Jumpers to cover long sleeved undershirt. Undershirts not to be visible. • Nepean CAPA HS woollen jumper or plain navy blue jumper - NO writing, visible logos or hooded jackets. • Nepean CAPA HS jacket. • Nepean CAPA HS cardigan. • Nepean CAPA HS tracksuit. 	<ul style="list-style-type: none"> • Nepean CAPA HS white polo shirt/ Nepean CAPA HS white cotton shirt. • Light coloured undershirts underneath polo. Jumpers to cover long sleeved undershirt. Undershirts not to be visible. • Navy blue trousers/ track pants – NO jeans patterns or visible logos. • Nepean CAPA HS woollen jumper, Nepean CAPA HS sloppy joe or plain navy blue jumper - NO writing, visible logos or hooded jackets. • Nepean CAPA HS jacket. • Nepean CAPA HS cardigan. • Nepean CAPA HS tracksuit.

- Belts:** No studded or coloured belts are permitted.
- Headwear:** Hats that provide sun protection are encouraged. Hats should be plain and free of graffiti. Excessive hair ornaments are NOT permitted.
- Jewellery:** In line with WHS: Excessive/ large jewellery items, unsafe facial and body piercings are banned from school.
- Make-Up:** Excessive make-up is not permitted.
- PDHPE:** The school sport shirt and sport shorts must be worn in PDHPE and at Wednesday sport. A hat is desirable. Joggers are to be worn for PDHPE and Wednesday sport only.
- Scarves:** Colours permitted are: navy blue, sky blue or white.
- Shoes:** **Totally black enclosed leather shoes (with black laces)** must be worn. **No colours on shoes are permitted.**



- Socks:** Black or white ankle socks. Black or navy tights may be worn with skirts.

Protective Clothing for Practical Lessons

Outlined below are the Department of Education clothing requirements relating to safety issues in practical subjects. Teachers will withdraw students from practical classes when Work Health Safety (WHS) rules are breached.

Food Technology	Enclosed shoes with a solid sole and leather upper. Hair to be tied back. White cotton drill apron.
Industrial Arts	Enclosed shoes with a solid sole and leather upper. Hair to be tied back. Navy cotton drill apron.
Science	Enclosed shoes with a solid sole and leather upper. Protective eyewear available in all rooms. Hair to be tied back.
Technology	Enclosed shoes with solid sole and leather upper.
Textiles & Design	Enclosed shoes with solid sole and leather upper.
Creative Arts	Enclosed shoes with solid sole and leather upper.

Procedure for student out of uniform

Students, who are out of uniform, must come to school looking neat and tidy with a note written by a parent explaining the circumstances. Students need to present this note to their Roll Call teacher who will issue a uniform pass in their diary or on a note, to excuse the lack of uniform on that day. The uniform pass must be kept all day and presented when requested.

Persistent failure to conform to the agreed uniform requirements of the school without a valid reason may result in a detention and parental contact.

Uniform Shop

The Uniform Shop is open **Mondays and Wednesdays from 7.30am to 9.30am** and **Fridays from 7.30am to 11.30am** during school terms.

Please go to the school website for opening hours during school holidays.

Appointments for January can be booked on <http://calendly.com/nepeanhs>

Payments can be made by cash and eftpos-NO cheques. Junior and Senior uniforms are all available at the Uniform Shop. The uniform shop is located at the eastern end of block E.



Visitors to the school

To ensure the safety of all students and to maintain a record of visitors, all visitors to the school must report directly to the Front Office and obtain a visitors pass. Visitors must enter A block via the front doors adjacent to the Great Western Highway.

Students are not permitted to have contact with personal visitors who are not their parents or official caregivers.

All visitors to the school must make an appointment if they wish to see staff members in order to prevent disruption to the education of students and to enable relevant information to be gathered in advance of the interview.

Website

The school website: <https://nepean-h.schools.nsw.gov.au> is an excellent medium of communication for the school. Parents can view important messages, peruse the school calendar, view the picture gallery, read the newsletter and local press items and find valuable information about our school and programs.

Wellbeing

Anti-Bullying

We aim to ensure that our school is a safe, nurturing, supportive and inclusive environment for all students and staff. This is strongly supported by our school values.

In order to effectively manage any incidences of bullying and harassment, students and parents are encouraged to report such incidents as soon as they occur.

Out of School Incidents

Generally, schools have no right or responsibility to intervene in out of school incidents. Students can only be disciplined for incidents that occur outside of school if there is a clear adverse effect on the safety and wellbeing of students while at school. Police should be contacted if incidents occur outside of school hours.

Cyber Bullying

Misuse of technology, for the purpose of harassment, intimidation and bullying is a breach of the law and a Federal offence. Students and parents need to be aware of the potential legal consequences for their behaviour. The school recommends contacting police if repeated electronic harassment occurs. Students and parents should remember that the misuse of technology, not the technology itself, is the cause of the harm. This behaviour should also be reported to the school if it directly impacts student learning and wellbeing at school.

Behaviour code for students

NSW public schools

NSW public schools are committed to providing safe, supportive and responsive learning environments for everyone. We teach and model the behaviours we value in our students.

In NSW public schools students are expected to:

- Respect other students, their teachers and school staff and community members
- Follow school and class rules and follow the directions of their teachers
- Strive for the highest standards in learning
- Respect all members of the school community and show courtesy to all students, teachers and community members
- Resolve conflict respectfully, calmly and fairly
- Comply with the school's uniform policy or dress code
- Attend school every day (unless legally excused)
- Respect all property
- Not be violent or bring weapons, illegal drugs, alcohol or tobacco into our schools
- Not bully, harass, intimidate or discriminate against anyone in our schools

Schools take strong action in response to behaviour that is detrimental to self or others or to the achievement of high quality teaching and learning.

Behaviour Code for Students: Actions

Promoting the learning, wellbeing and safety of all students in NSW Public Schools is a high priority for the Department of Education.

We implement teaching and learning approaches to support the development of skills needed by students to meet our high standards for respectful, safe and engaged behaviour.

Respect

- Treat one another with dignity
- Speak and behave courteously
- Cooperate with others
- Develop positive and respectful relationships and think about the effect on relationships before acting
- Value the interests, ability and culture of others
- Dress appropriately by complying with the school uniform or dress code
- Take care with property

Safety

- Model and follow departmental, school and/or class codes of behaviour and conduct
- Negotiate and resolve conflict with empathy
- Take personal responsibility for behaviour and actions
- Care for self and others
- Avoid dangerous behaviour and encourage others to avoid dangerous behaviour

Engagement

- Attend school every day (unless legally excused)
- Arrive at school and class on time
- Be prepared for every lesson
- Actively participate in learning
- Aspire and strive to achieve the highest standards of learning

The principal and school staff, using their professional judgment, are best placed to maintain discipline and provide safe, supportive and responsive learning environments. The department provides a policy framework and resources such as Legal Issues Bulletins, access to specialist advice, and professional learning to guide principals and their staff in exercising their professional judgment. In this context the NSW Government and the Department of Education will back the authority and judgment of principals and school staff at the local level.

CAPA SUBJECTS AND ELECTIVES INFORMATION

Year 7 - One elective

AUDITIONED STUDENTS

All auditioned CAPA students will go into their relevant subject area. Students will complete 5 hours per fortnight in their auditioned CAPA subject.

NON AUDITIONED STUDENTS

Students will study Supplementary Studies throughout the year. These rotate each term.

Year 8 - Two electives

AUDITIONED STUDENTS

All auditioned CAPA students will continue in their relevant subject area. Auditioned CAPA students who were successful in gaining a place in **two** CAPA subjects when entering the school in Year 7, can automatically pick up that subject in Year 8. (If available within line structure)

NON AUDITIONED STUDENTS/AUDITIONING STUDENTS

Students wishing to audition for CAPA subjects need to go through the standard application/audition process. This includes CAPA students who would like to audition for a second CAPA subject, who did not originally audition when entering the school.

Year 9 - Three electives

All students **choose two electives** that they will maintain for **200 hours (Year 9 & 10)**

All students will also **choose a third elective** that can **change from Years 9 to**

Elective 1

Auditioned students will do the **ADVANCED course** in their relevant auditioned subject area.

Elective 2

Auditioned students will do the **EXTENSION course** in their relevant auditioned subject area.

Elective 3

Students auditioned in **2** CAPA subjects, will do the **ADVANCED course** in their 2nd subject area. Students auditioned in **3** CAPA areas may do the **ADVANCED/ EXTENSION courses** in each one of the elective lines, provided there is not a line clash.

Year 10 - Three electives

Elective 1 and 2

All students **will continue in their chosen 200 hour electives.**

Elective 3

Most students will be able to choose a new elective. Auditioned CAPA students are encouraged to continue in their relevant **EXTENSION course** or **choose a different elective.**

CAPA Subjects Explained

Some CAPA subjects are being offered to ALL students in Years 8,9 and 10, in a general capacity. The below information explains how the CAPA courses are structured:

CAPA Classes - for students who have an interest in CAPA subjects (no audition)

Dance	Music	Drama	Visual Arts
-------	-------	-------	-------------

- These courses are designed for all students to access, as no audition is necessary.
- The courses will give students who are auditioned in another discipline, the opportunity to take a second or third CAPA subject in a non-competitive environment.
- Please Note: These classes will only run if there is adequate interest i.e. high enough numbers, etc.

Advanced CAPA Classes

Advanced Dance	Advanced Drama	Advanced Music	Advanced Creative Arts	Advanced Circus Arts
----------------	----------------	----------------	------------------------	----------------------

- These courses are designed for students that have been accepted into a CAPA program via audition process.
- This course is compulsory for these students and will be carried through to Year 10 as their 200 hour course.
- Students are taught NESA content, preparing them for Stage 6 Courses.

Extension CAPA Courses

Extension Dance	Extension Drama	VET Music Industry	Extension Creative Arts
-----------------	-----------------	--------------------	-------------------------

- These courses are extension and enrichment courses for auditioned CAPA students.
- These courses are compulsory for auditioned students in Year 9 only. They will be skills based and focus on accelerating the students in their specialised subject area.
- With the exception of VET Music Industry these courses are School Developed and therefore have the freedom to include various content not accessed in the Advanced courses.
- VET Music Industry is a TAFE course that offers students Certificate III in VET Music Industry. Students must take this course for 2 years in order to receive qualification.

PAYMENTS

Parents may pay school and subject materials contributions via the school website at <https://nepean-h.schools.nsw.gov.au> (please click on the “Make a Payment” option and complete the details – please disregard the reference number), or by cash/cheque/credit card at the Administration Office between **8.00am and 1.55pm**, Monday to Friday during school terms. Students may pay before school (from 8am), at recess and lunch.

CAPA Extra Curricular Program Fees

A List of the CAPA extra curricular programs on offer, and their costs will be available online, late Term 4, 2022.

All fees are accurate at the time of publishing but may be subject to change.

Year 7 Contributions, Subject & Elective Fees, 2023

Year 7 Annual School Fees	
All students: Voluntary School Contribution	\$60
School Diary	\$8.50
Technology Mandatory	\$80
Visual Arts Mandatory	\$90
Music Mandatory Students will alternate between Music and Language. Half of Year 7 will complete Music with the remaining half completing language in 2023.	\$35
Year 7 CAPA Audition Annual Subject Fees	
Auditioned Circus Arts	\$150
Auditioned Dance	\$100
Auditioned Drama	\$100
Auditioned Music: Vocal and Instrumental	\$100
Auditioned Visual Arts	\$100

Belts: No studded or coloured belts are permitted.

Year 8 Contributions, Subject & Elective Fees, 2023

Year 8 Annual School Fees		
All students pay: Voluntary School Contribution		\$60
School Diary		\$8.50
Technology Mandatory		\$80
Music Mandatory		\$35
Students will alternate between Music and Language. Half of Year 8 will complete Language with the remaining half completing Music in 2023.		
Year 8 <u>CAPA Audition</u> - Annual Subject Fees		
Subject	Faculty	Fee
Advanced Circus Arts	PA	\$150
Advanced Dance	PA	\$100
Advanced Drama	PA	\$100
Advanced Music	PA	\$100
Advanced Visual Arts	CA	\$100
Year 8 <u>Non-Audition Elective</u> - Annual Subject Fees		
Subject	Faculty	Fee
Costume and Makeup Incorporated	TAS	\$50
Creative Cooking	TAS	\$70
Farm Skills	Science	\$50
Making Wooden Toys	TAS	\$50
Music	PA	\$50
Outdoor Recreation & Wilderness Studies	PDHPE	\$30
Performing Arts Mash	PA	\$30
Photography & Digital Media	CA	\$80
Visual Arts	CA	\$80
Arts in the Community (cost per term)	CA	\$50
Year 8 Term Sport Fees		
Recreational Sport	PDHPE	TBA
Weekly venue or Grade Sport	PDHPE	TBA

Year 9 Contributions, Subject & Elective Fees, 2023

Year 9 Annual School Fees		
All students pay:	Voluntary School Contribution	\$60
	School Diary	\$8.50
Year 9 <u>General - Subject Fee</u>		
Ceramics (SDC)	CA	\$100
Design & Technology	TAS	\$75 Incl Brushes & Portfolio
Drama	PA	\$100
Duke of Edinburgh Award (SDC)	TAS	\$145 + ongoing costs
Filmmaking, Videography & Production	PA	\$80
Food Technology	TAS	\$100
Industrial Technology - Metal	TAS	\$45 + Ind. project costs
Industrial Technology - Timber	TAS	\$45 + Ind. project costs
Information and Software Technology	TAS	\$20
iSTEM	Sci-	\$20
Marine & Aquaculture Technology	Sci-	\$40
Music	PA	\$50
Physical Activity & Sports Studies (PASS)	PDHPE	\$40
Photography& Digital Media	CA	\$80
Strength and Conditioning	PDHPE	\$35
Visual Arts	CA	\$80
Visual Design	CA	\$80
Arts in the Community (cost per term)	CA	\$50
Year 9 <u>Advanced CAPA</u>		
Advanced Circus Arts	PA	\$150
Advanced Dance	PA	\$100
Advanced Drama	PA	\$100
Advanced Music	PA	\$100
Advanced Visual Arts	CA	\$100
Year 9 <u>Extension CAPA</u>		
Extension Dance	PA	\$150
Extension Drama (NYPT)	PA	\$100
Extension Visual Arts	CA	\$100
VET Music Industry	PA	\$120
Year 9 Sport Fees		
Recreational Sport	PDHPE	TBA
Weekly venue or Grade Sport	PDHPE	TBA

Year 10 Contributions, Subject & Elective Fees, 2023

Year 10 Annual School Fees		
All students pay:	Voluntary School Contribution	\$60
	School Diary	\$8.50
Year 10 <u>General - Subject Fee</u>		
Ceramics	CA	\$100
Design & Technology	TAS	\$75 Incl Brushes & Portfolio
Duke of Edinburgh Award	TAS	\$145 + ongoing costs
Filmmaking, Videography & Production	PA	\$80
Food Technology	TAS	\$100
Industrial Technology - Metal	TAS	\$45 + Ind. project
Industrial Technology - Timber	TAS	\$45 + Ind. project
Information and Software Technology	TAS	\$20
iSTEM	Science	\$40
Marine & Aquaculture Technology	Science	\$40
Music	PA	\$50
Photography & Digital Media	CA	\$80
Physical Activity and Sport Studies (PASS)	PDHPE	\$40
Strength and Conditioning	PDHPE	\$35
Visual Arts	CA	\$80
Arts in the Community (cost per term)	CA	\$50
Year 10 <u>Advanced CAPA</u>		
Advanced Circus Arts	PA	\$150
Advanced Dance	PA	\$100
Advanced Drama	PA	\$100
Advanced Music	PA	\$100
Advanced Visual Arts	CA	\$100
Year 10 <u>Extension CAPA</u>		
Extension Dance	PA	\$150
Extension Drama	PA	\$100
Extension Visual Arts	CA	\$100
VET Music Industry	PA	\$120
Year 10 Sport Fees		
Recreational Sport	PDHPE	TBA
Weekly venue or Grade Sport	PDHPE	TBA

Year 11 Contributions, Subject & Elective Fees, 2023

Year 11 Annual School Fees		
All students pay:	Voluntary School Contribution	\$60
	School Diary	\$8.50
Year 11 <u>Electives</u>		
Subject	Faculty	Fee
Ceramics	CA	\$100
Dance	PA	\$150
Drama	PA	\$100
Food Technology	TAS	\$60
Industrial Technology - Timber and Furniture	TAS	\$50 + individual project costs
Music 1 & 2	PA	\$100
Photography, Video & Digital Imaging	CA	\$100
PDHPE RLSSA Senior First Aid Accreditation & Outdoor Rec Camp (these activities form part of the course and are a mandatory fee)	PDHPE	\$100
Science Courses - all	Science	\$50
Software Design and Development	TAS	\$50
Textiles & Design	TAS	\$50 + Ind. project costs
Visual Arts	CA	\$100
Visual Design	CA	\$100
Year 11 Sport Fees (Sport is optional for Year 11)		
Recreational Sport	PDHPE	TBA
Weekly venue or Grade Sport	PDHPE	TBA

Year 12 Contributions, Subject & Elective Fees, 2023

Year 12 Annual School Fees		
All students pay:	Voluntary School Contribution	\$60
	School Diary	\$8.50
Year 12 <u>Electives</u>		
Subject	Faculty	Fee
Ceramics	CA	\$100
Dance	PA	\$150
Drama	PA	\$100
Food Technology	TAS	\$40
Industrial Technology - Timber	TAS	\$50 + individual project costs
Music 1 & 2	PA	\$100
Science Courses - all	SCIENCE	\$50
Textiles & Design	TAS	\$50 + individual project costs
Visual Arts	CA	\$100

Special Education Subject & Program Fees, 2023

Special Education Annual School Fees		
All students pay:	Voluntary School Contribution	\$60
	School Diary	\$8.50
For students who access mainstream class electives, please see relevant year for costs		
	Creative Arts Discrete	\$40
	Music Discrete	\$15
	Technology Discrete	\$70

Vocational Education Course Fees, 2023

Vocational Education Course Annual Fees	
Assistant Dance Teaching	\$100
Business Services	\$20
Construction	\$60 + white card + individual costs
Entertainment Industry	\$120 + white card
Hospitality	\$120 + uniform & equipment (\$75)
Information and Digital Technology	\$20
Sport Coaching	\$60 + first aid

Note: VET fee payments are to be made at the office of the school delivering the course in advance of classes commencing. Uniform/special clothing/footwear and equipment – must be supplied by the student.



Meetings 2023

Nepean Creative and Performing Arts High School
Parents and Citizens (P&C) Meetings are held the fourth Wednesday
of the month during school terms. Everyone is welcome!

Time: 7.00pm—8.30pm (*approximate finish with tea and coffee*)

Venue: Staff Common Room (*located in A Block above Admin office*)

- Come along and
- listen to our guest speakers
 - hear the latest school news
 - ask questions
 - contribute your views

P&C Meeting Dates for 2023

Term 1: Wed 22.02.23
Wed 22.03.23

Term 2: Wed 26.04.23
Wed 24.05.23
Wed 28.06.23

Term 3: Wed 26.07.23
Wed 23.08.23

Term 4: Wed 25.10.23 - Annual General Meeting
Wed 22.11.23 - End of Year P&C Dinner



<https://www.facebook.com/nepeancapahighschoolpandc>



Nepean Creative and Performing Arts High School

Principal

Mrs Tania Irons

Deputy Principals

Mrs Natalie Isakov

Mr Matthew Knowles

TBA

Year	2023 Year Advisers	2023 Assistant Year Advisers
7	Mr R Andrews	Mr A Moore
8	Miss M Pieri	Mr M Patterson
9	Mr B Green	Ms C Nguyen
10	Mrs T Jessup	Mr B Johnson
11	Miss T Gambell	Mr K Bright
12	Mr M Hayes	Mr J Gillespie
Head Teachers		
Administration	Ms B Douglass	
Creative Arts	Mrs P Rowston	
English	Ms C Reynolds	
Human Society and Its Environment	Mr K Finemore	
Mathematics	Ms R Young	
Performing Arts	Ms A Rudolf	
PD/Health/PE	Mr G Turner - Relieving	
Science	TBA	
Secondary Studies	Mrs A Witheridge	
Special Education Unit	Ms M Foord	
Teaching and Learning	Mrs M Abson—Relieving	
Technological and Applied Studies	Ms A Hay	
Careers Adviser	Ms V Jansen	
Learning & Support Teachers	Mrs J Patterson	
	Mr S Oudkerkpool, Miss L Sherry	
Librarian	Miss L Sherry	
School Counsellors	Ms L Crooke & Ms J Bury	
Sport Coordinators	Ms E Meyers	



2023 School Captains:

Anna Koutzas and Alana Willetts

2023 Vice Captains:

Liam Matthews and Xander Yeo

2023 Prefect Portfolio Leaders:

Miah Green, Xander Khazma, Bethany Dear, Kelecia Wales, Mackenzie Laurence





Nepean Creative and Performing Arts High School

www.facebook.com/NepeanCreativeAndPerformingArtsHighSchool

Website: <https://nepean-h.schools.nsw.gov.au>

Email: nepean-h.school@det.nsw.edu.au

115-119 Great Western Highway Emu Plains 2750

Locked Bag 6004 Emu Plains 2750

Phone: 4728 7200 Fax: 4735 8924

Aspiring the Heights through Care, Opportunity and Success